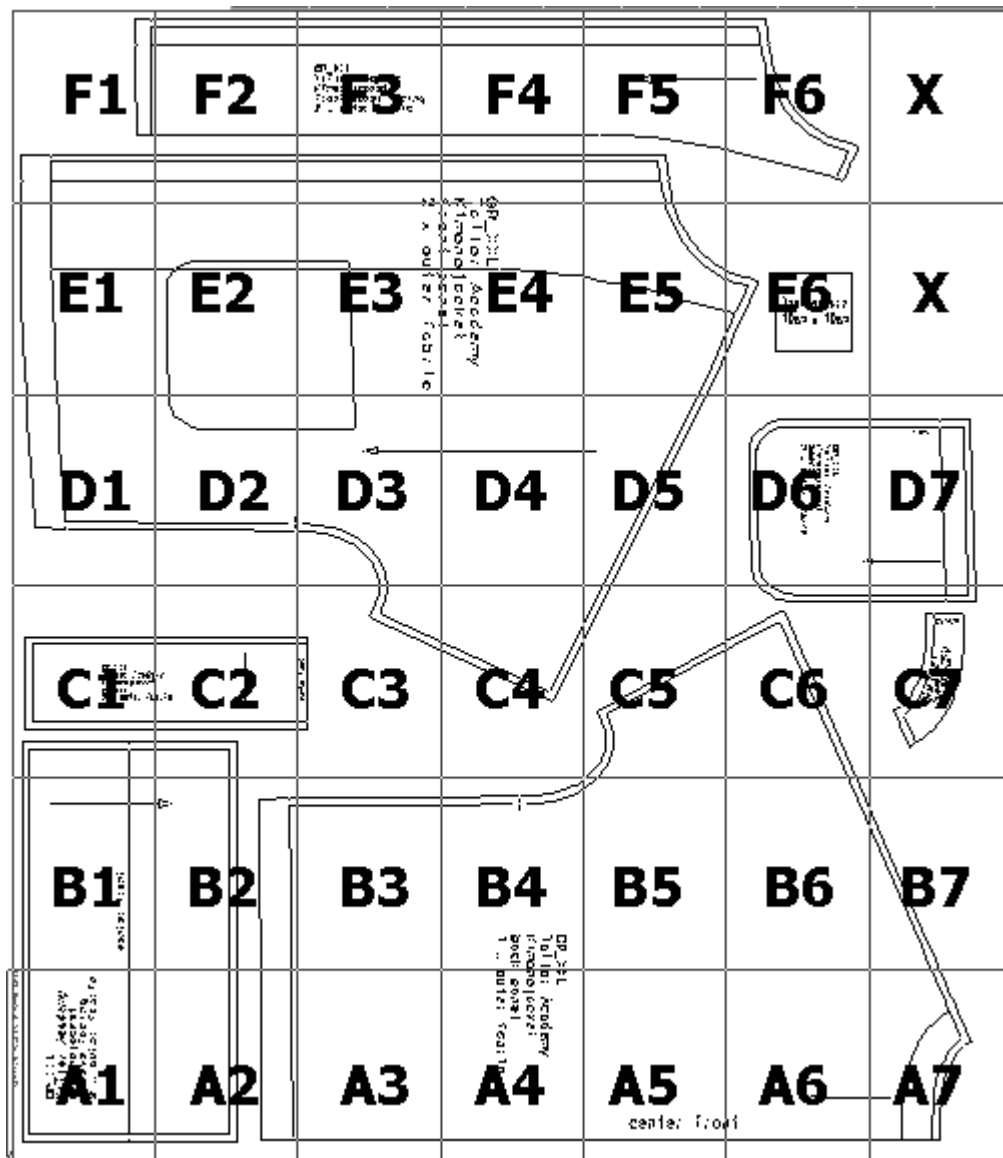


# Printing overview

Important: Please print the test page to ensure your patterns are printed in the correct size. The test page and printing instructions are included in the downloads folder.



GR\_S  
Tailor Academy  
Kimono jacket  
sleeve facing  
2 x outer fabric

GR\_S  
Tailor Academy  
Kimono jacket  
sleeve facing  
2x outer fabric

((A,02): Kimono jacket.mdl (..\Tailor Academy\_new\))

( A,03) : Kimono jacket.mdl (..\Tailor Academy_new\)	

or Academy

no jacket

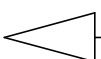
panel

outer fabric

(A,04): Kimono jacket.mdl (..\Tailor Academy\_new\)

( A,05) : Kimono jacket.mdl (..\Tailor Academy\_new\)

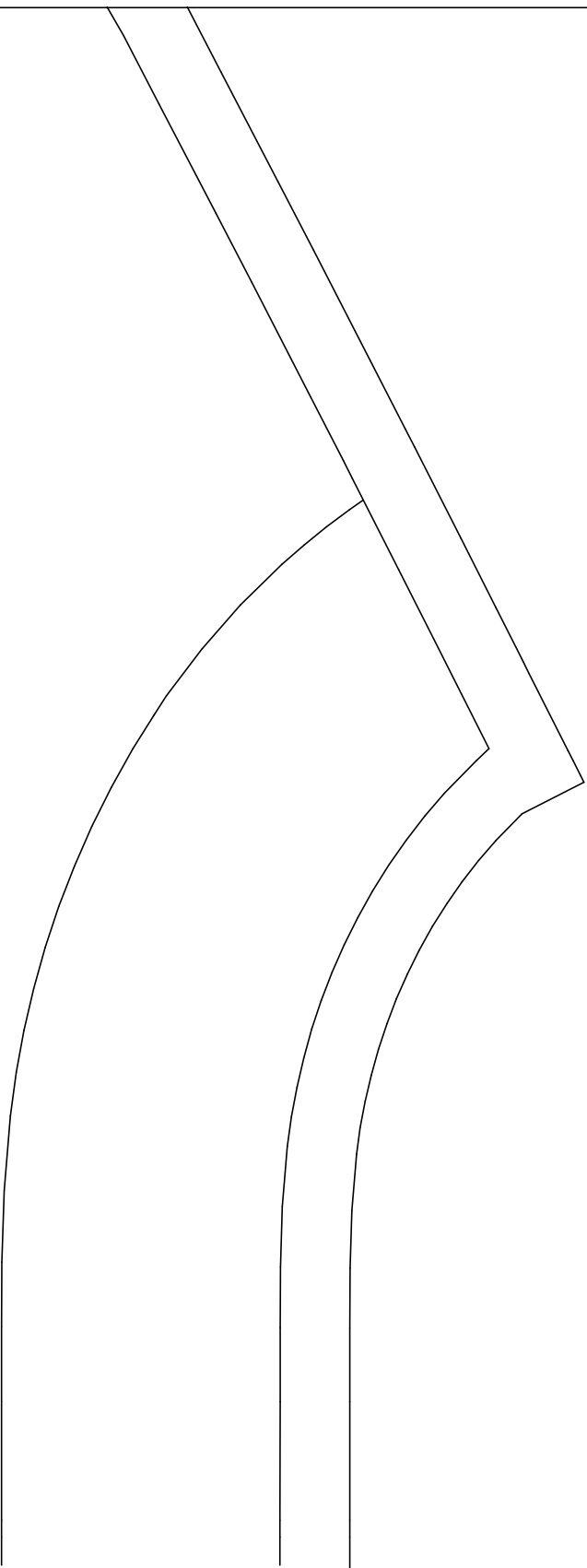
center fro



t

u

( A,06) : Kimono jacket.mdl (..\Tailor Academy\_new\)

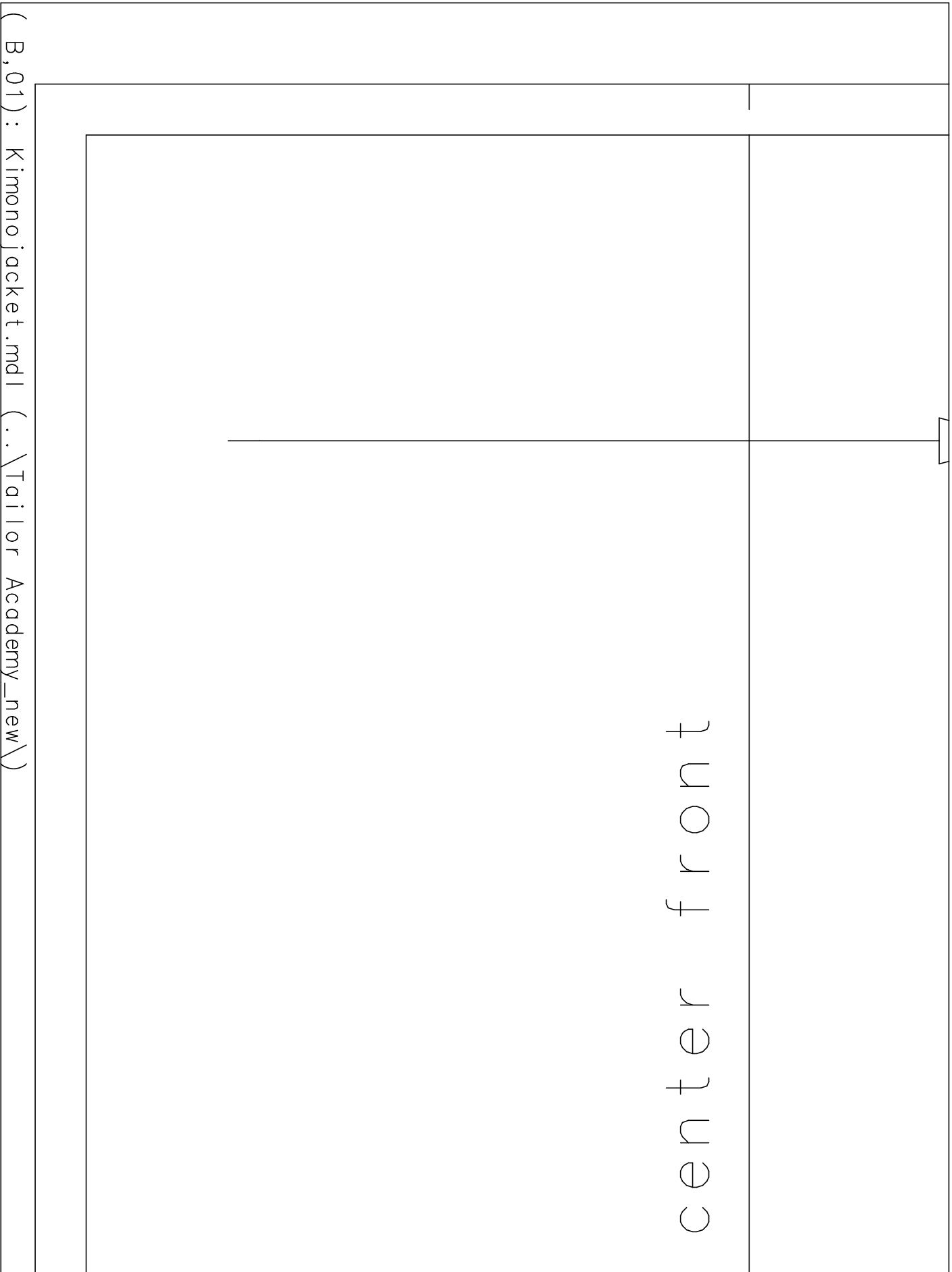


( A,07) : Kimono jacket.mdl (..\Tailor Academy\_new\)





front



( B,01): Kimono jacket.mdl (..\Tailor Academy\_new\)

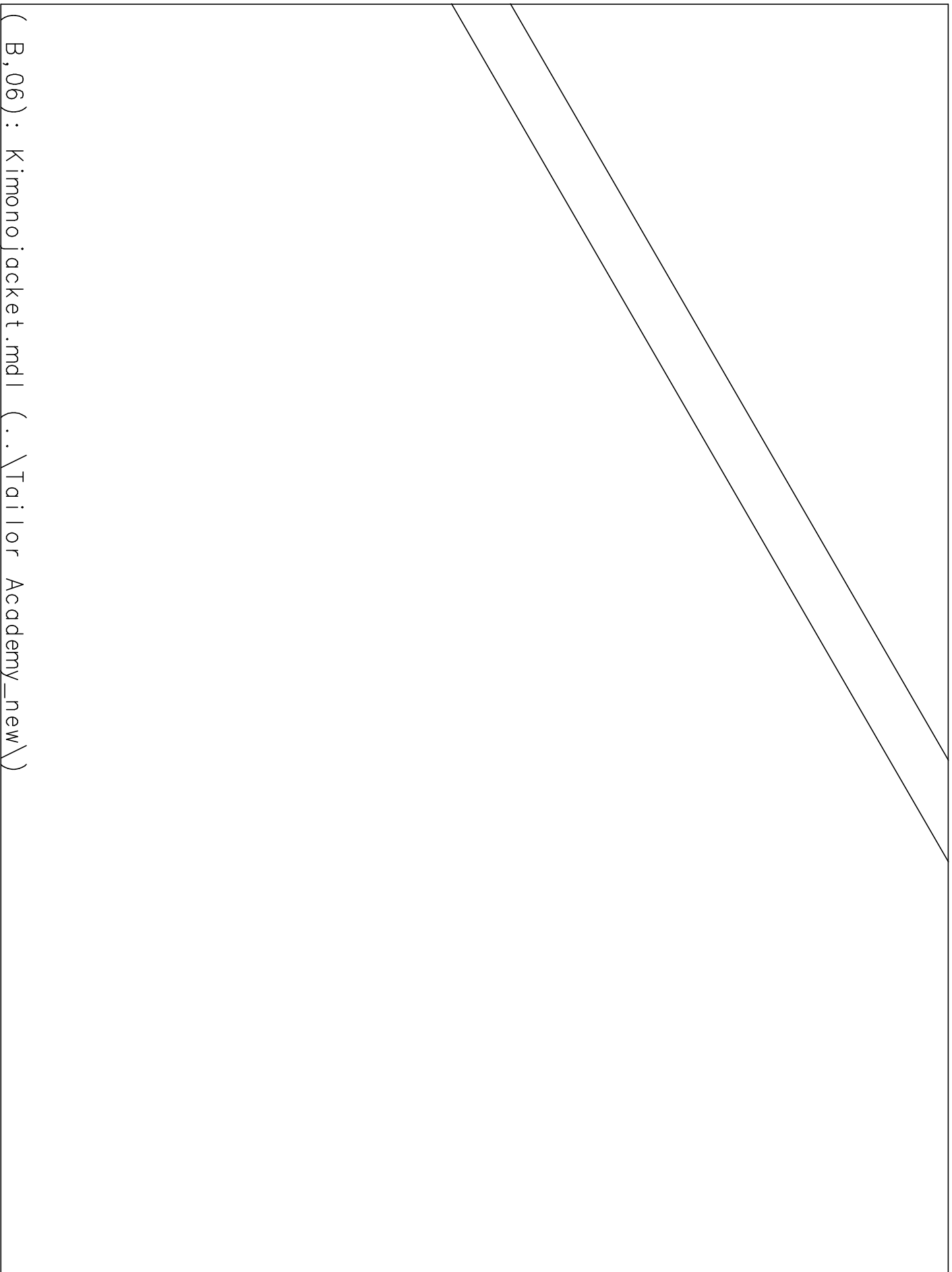
			( B,02) : Kimono jacket.mdl (V...Tailor Academy_new\)
--	--	--	---

( B,03) : Kimono jacket.mdl (..\Tailor Academy_new\)		

GR\_s  
Tail  
Kimc  
back  
1  
X

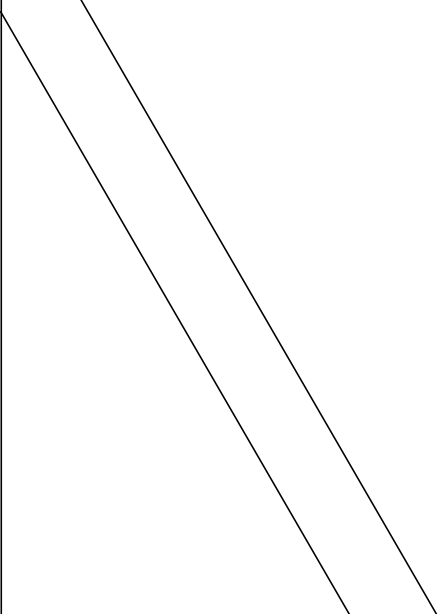
( B,04) : Kimono jacket.mdl (..\Tailor Academy\_new\)

( B,05) : Kimono jacket.mdl (...\\Tailor Academy\_new\\)



( B,06) : Kimono jacket.mdl (..\Tailor Academy\_new\)

( B,07) : Kimono jacket.mdl (..\Tailor Academy\_new\)



( C,01): Kimono jacket.mdl (..\Tailor Academy\_new\)

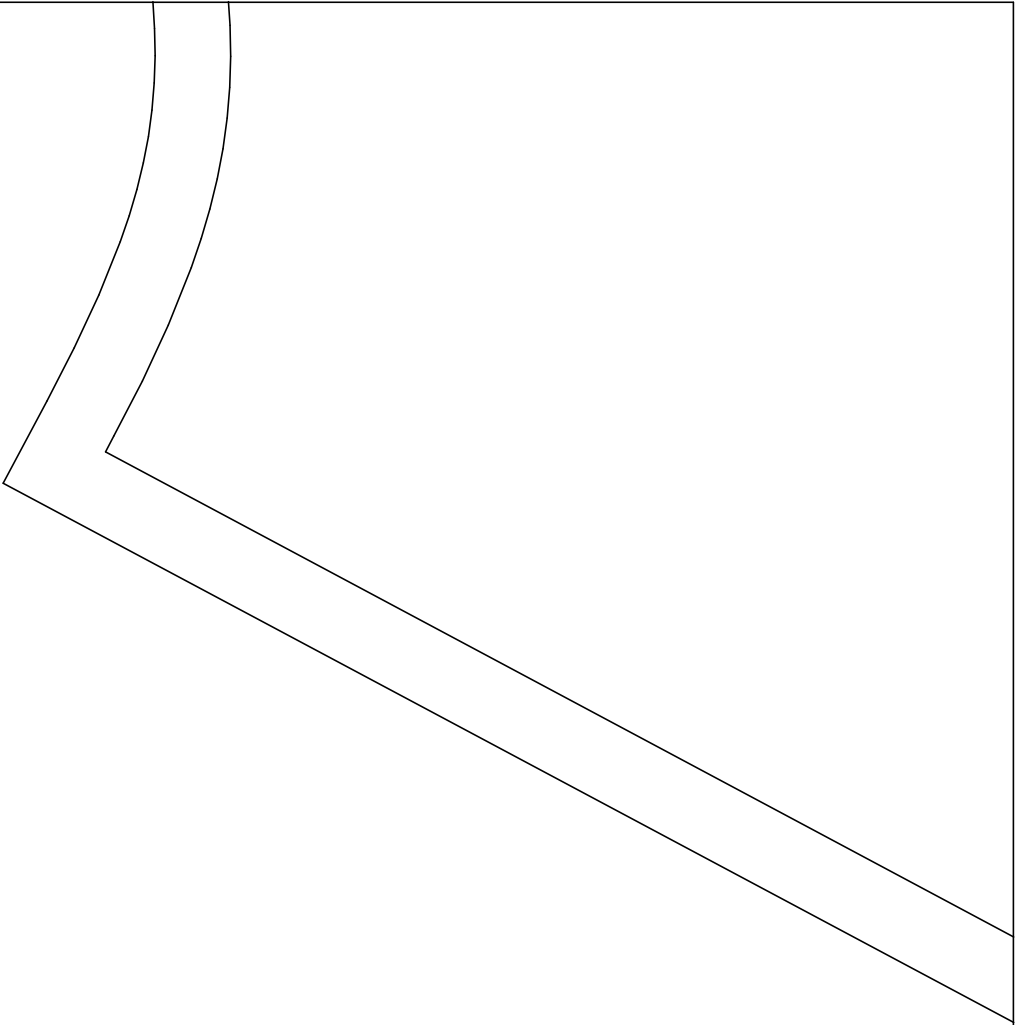
GR\_S  
Tailor Academy  
Kimono jacket  
collar  
2 x outer fabric



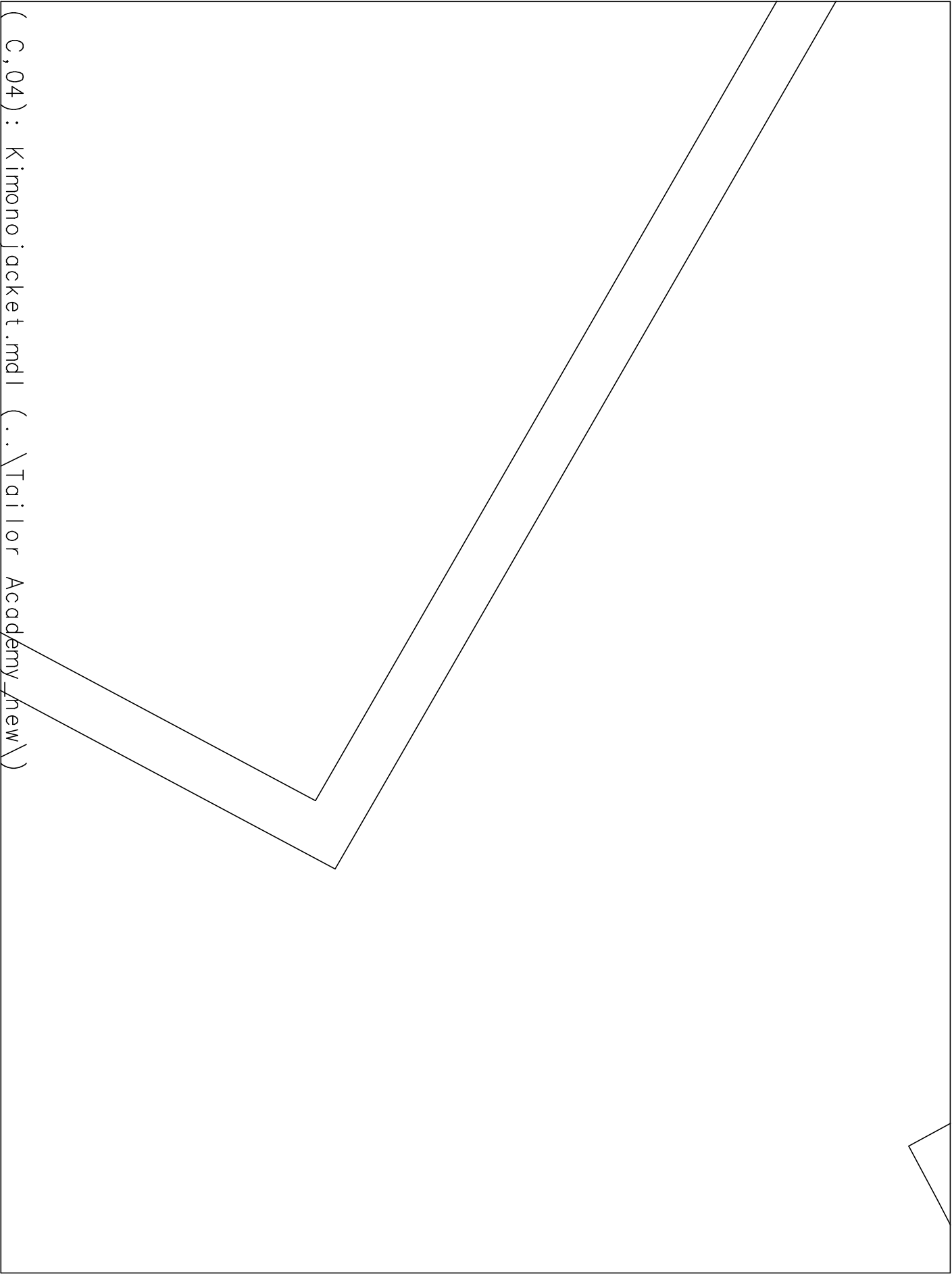
front panel



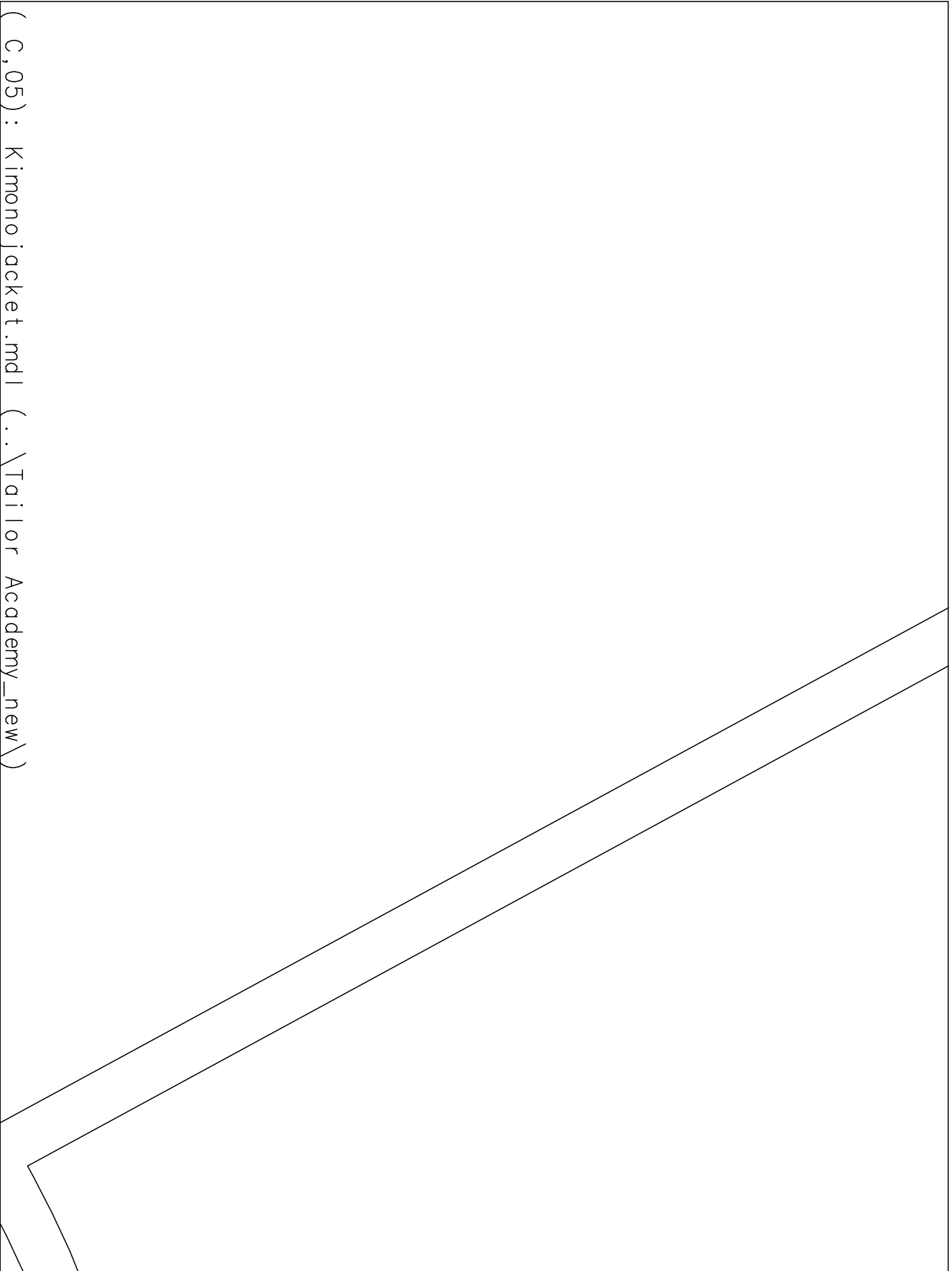
(C, 02): Kimono jacket.mdl (..\Tailor Academy\_new\)



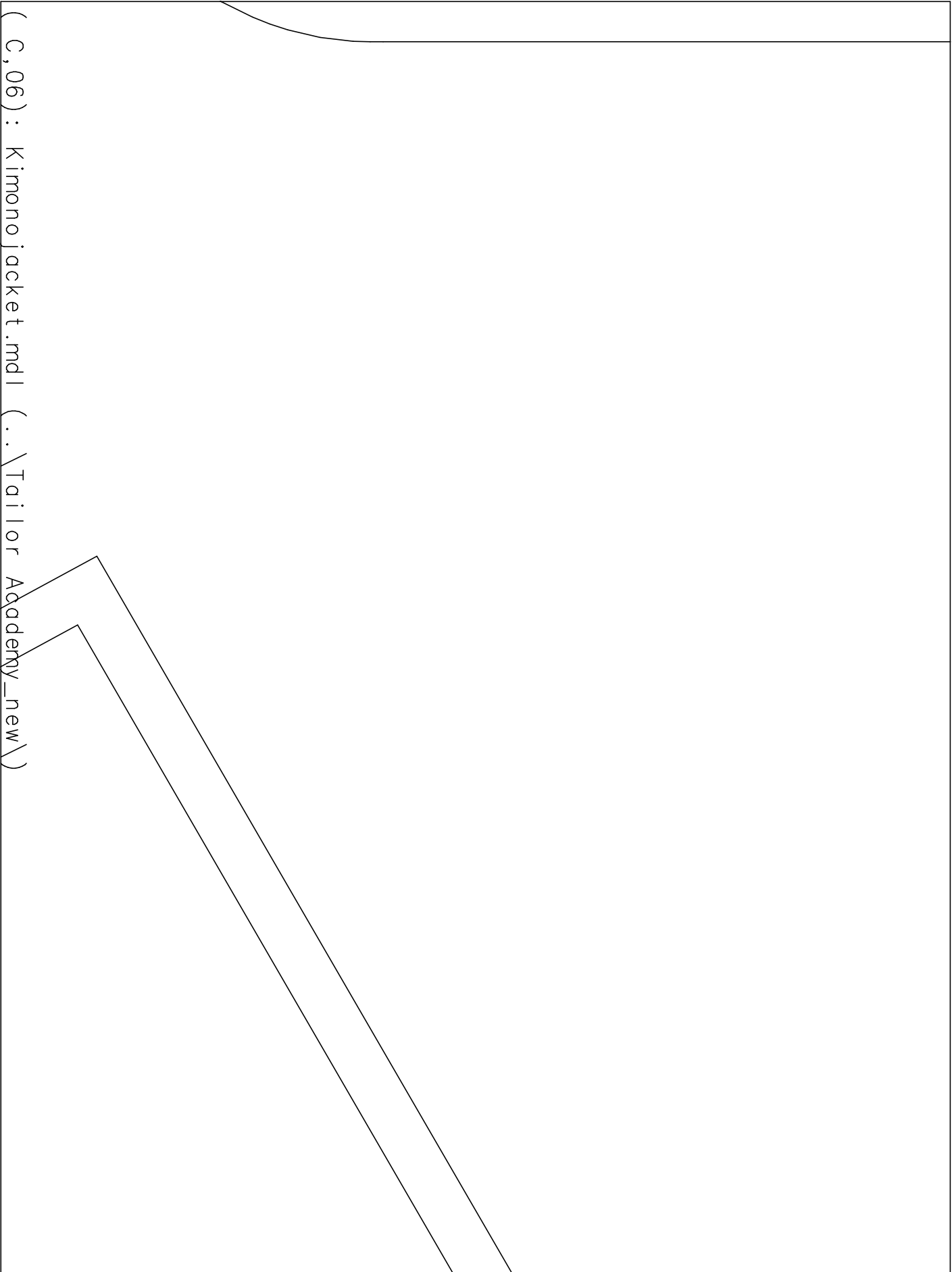
( C,03) : Kimono jacket.mdl (..\Tailor Academy\_new\)



( C,04) : Kimono jacket.mdl (..\Tailor Academy\_new\)

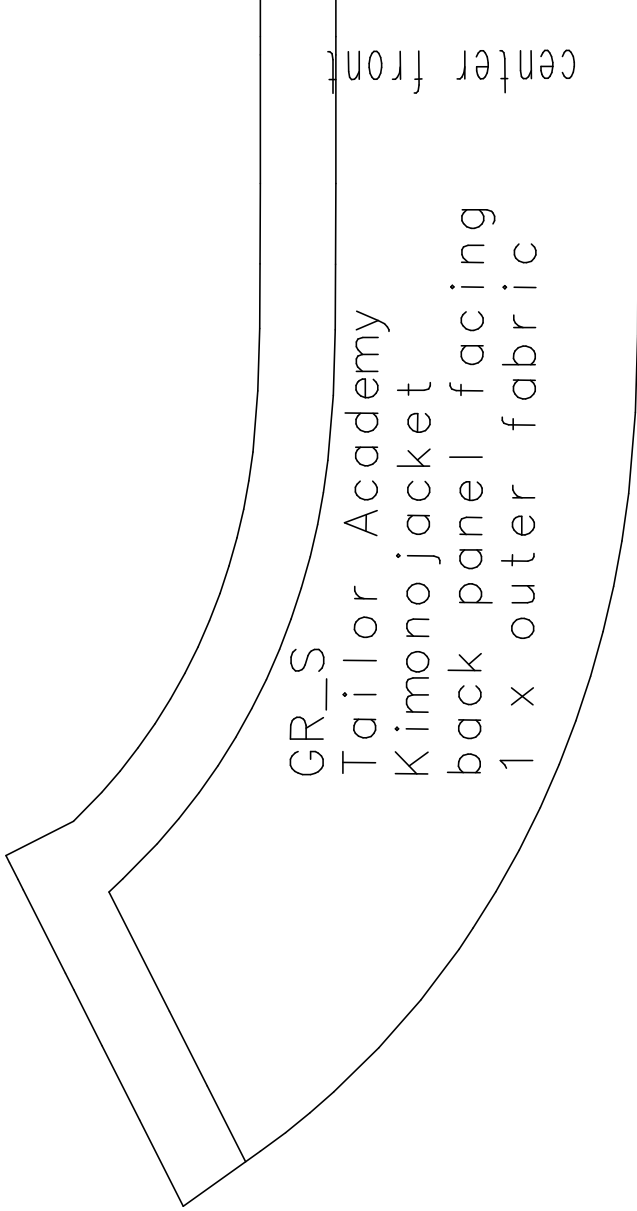


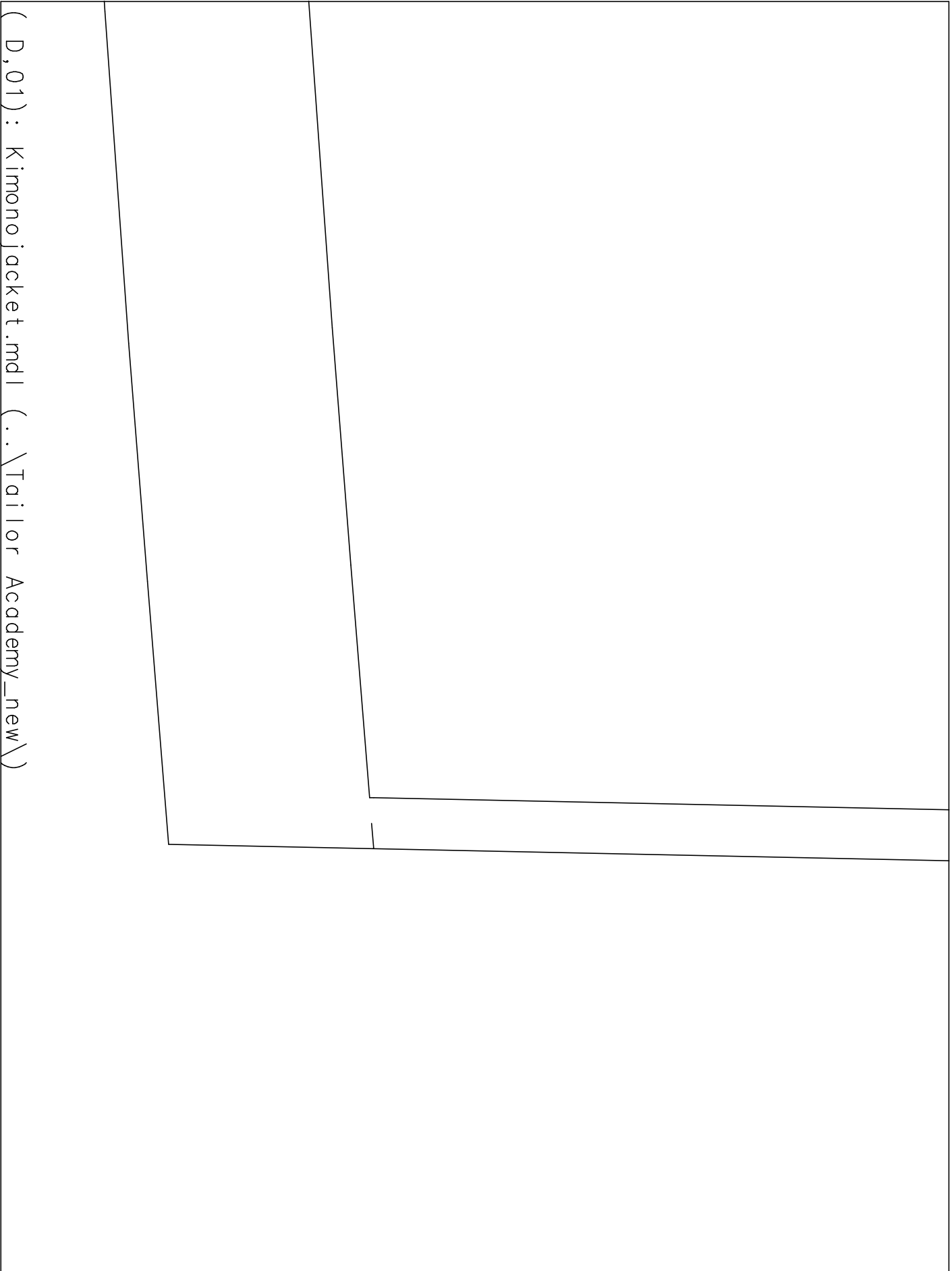
( C,05) : Kimono jacket.mdl (..\Tailor Academy\_new\)



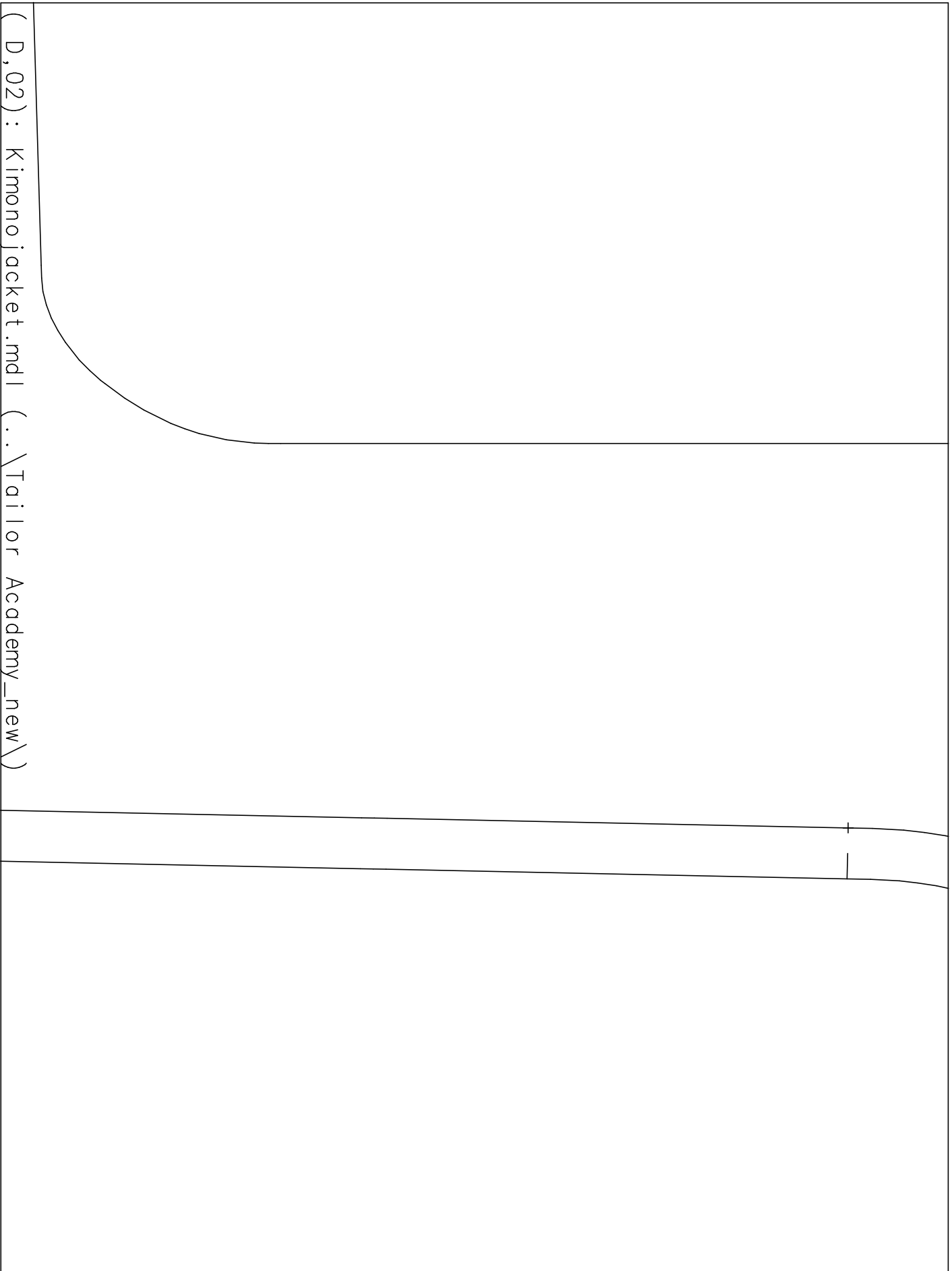
( C, 06 ) : Kimono jacket.mdl ( .. \Tailor Academy\_new \ )

(C,07): Kimono jacket.mdl (..\Tailor Academy\_new\)





( D,01) : Kimono jacket.mdl (..\Tailor Academy\_new\)

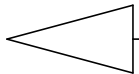


( D, 02 ) : Kimono jacket.mdl ( .. \Tailor Academy\_new \ )

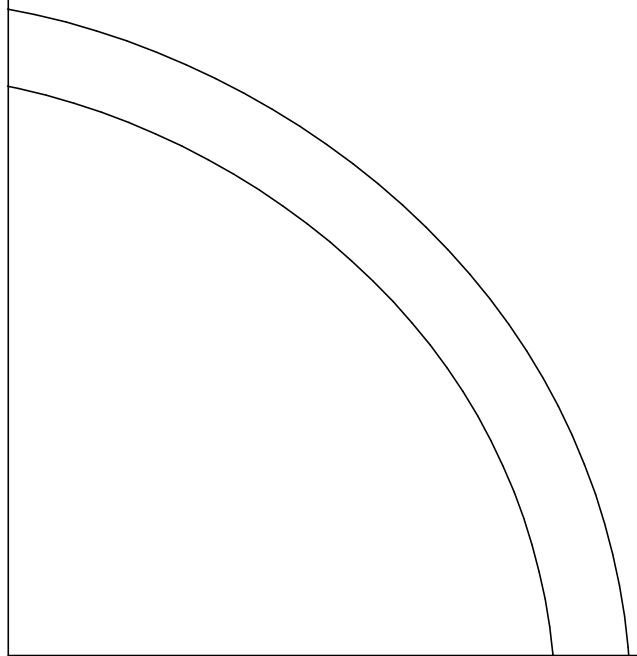


t y

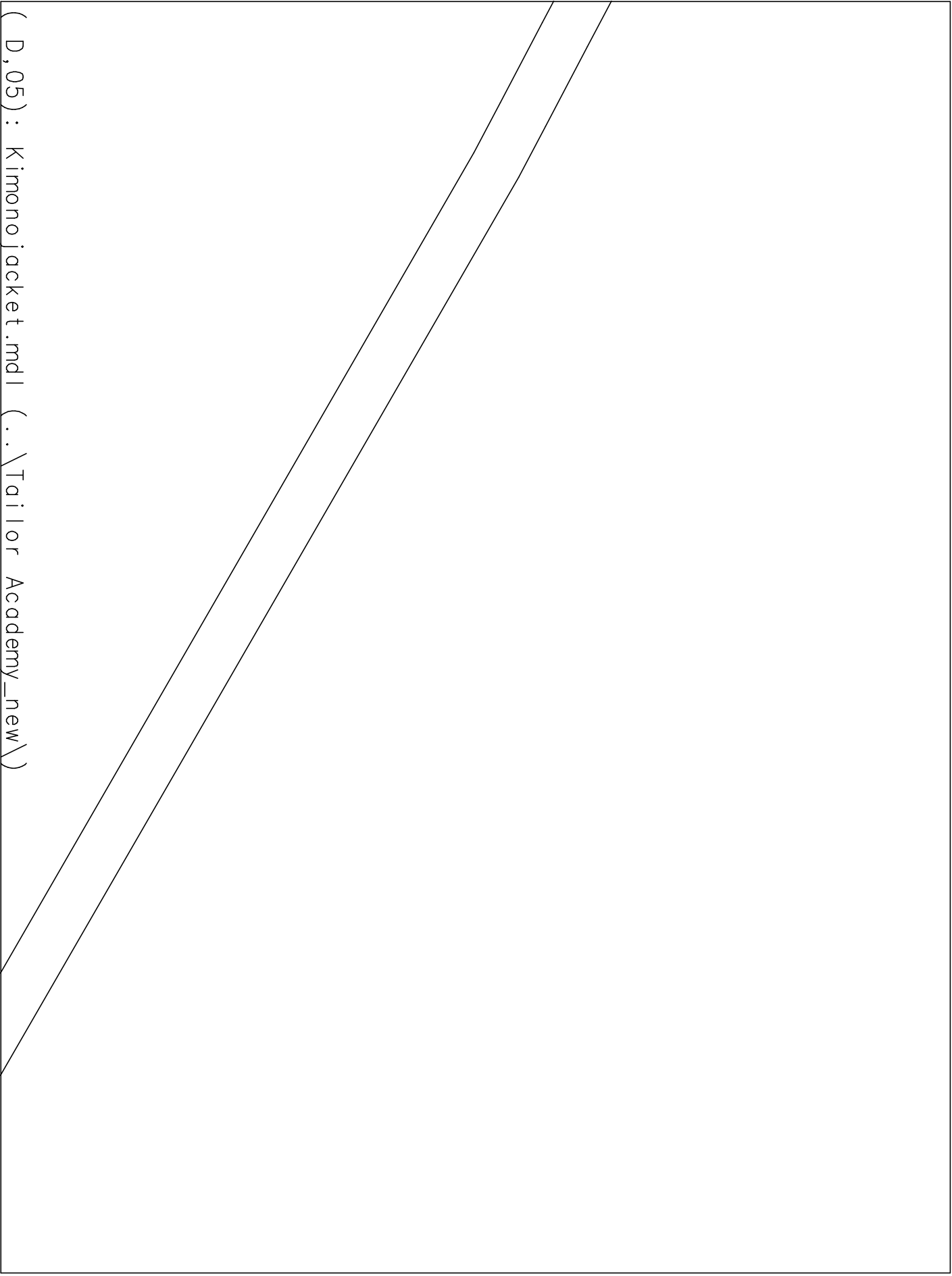
apric



(D,03): Kimono jacket.mdl (.\Tailor Academy\_new\)

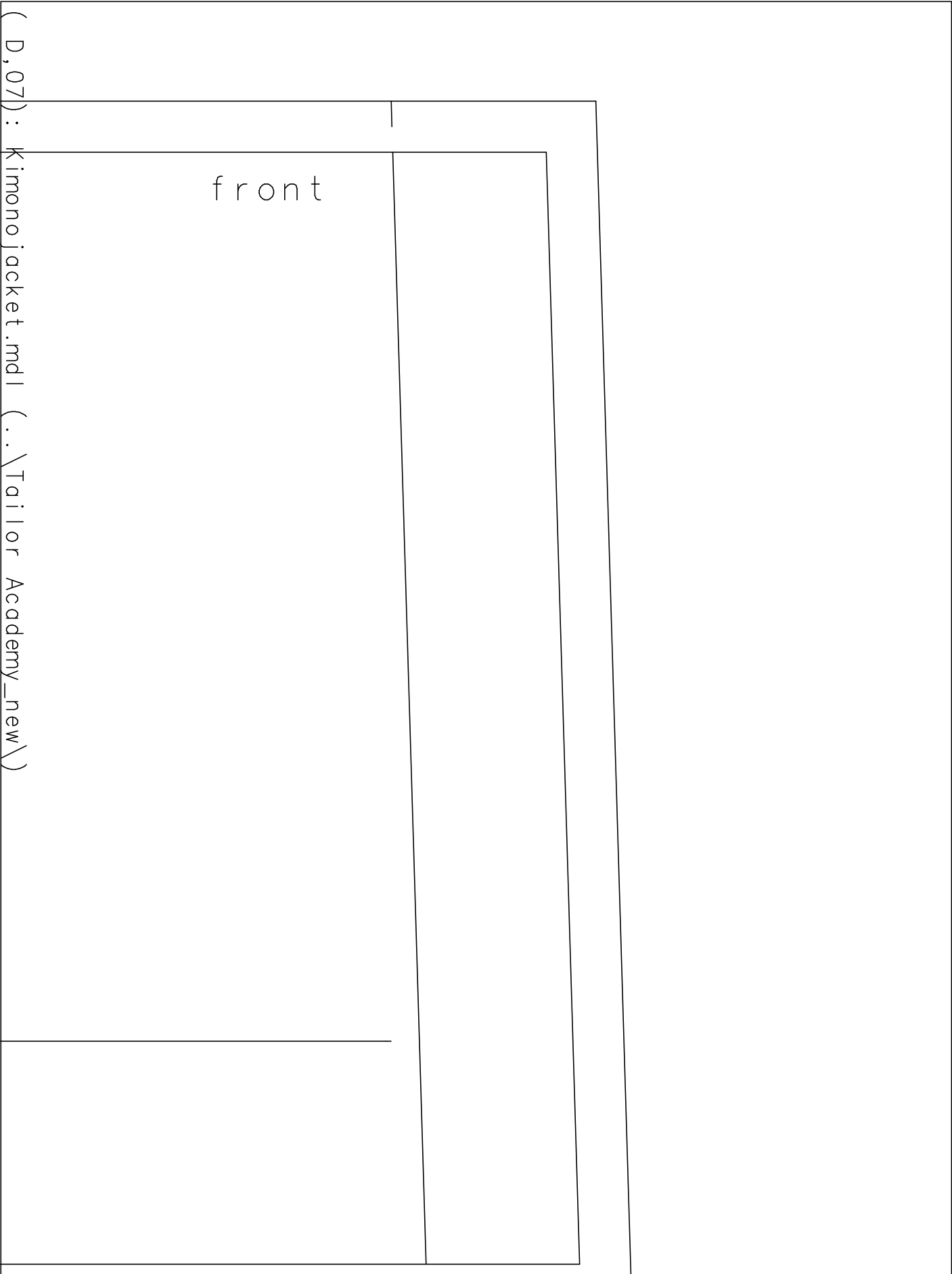


D, 04): Kinohojacket.mdl (..\Tailor Academy\_new\)





GR\_S  
Tailor Academy  
Kimono jacket  
pocket  
2 x outer fabric



This image shows a completely blank white page enclosed by a thin black rectangular border. There are no markings, text, or illustrations on the page.

((E, 02): kimono jacket.mdl (..\Tailor Academy\_new))

Kimono jacket  
front  
2 X out  
jacket  
panel  
f

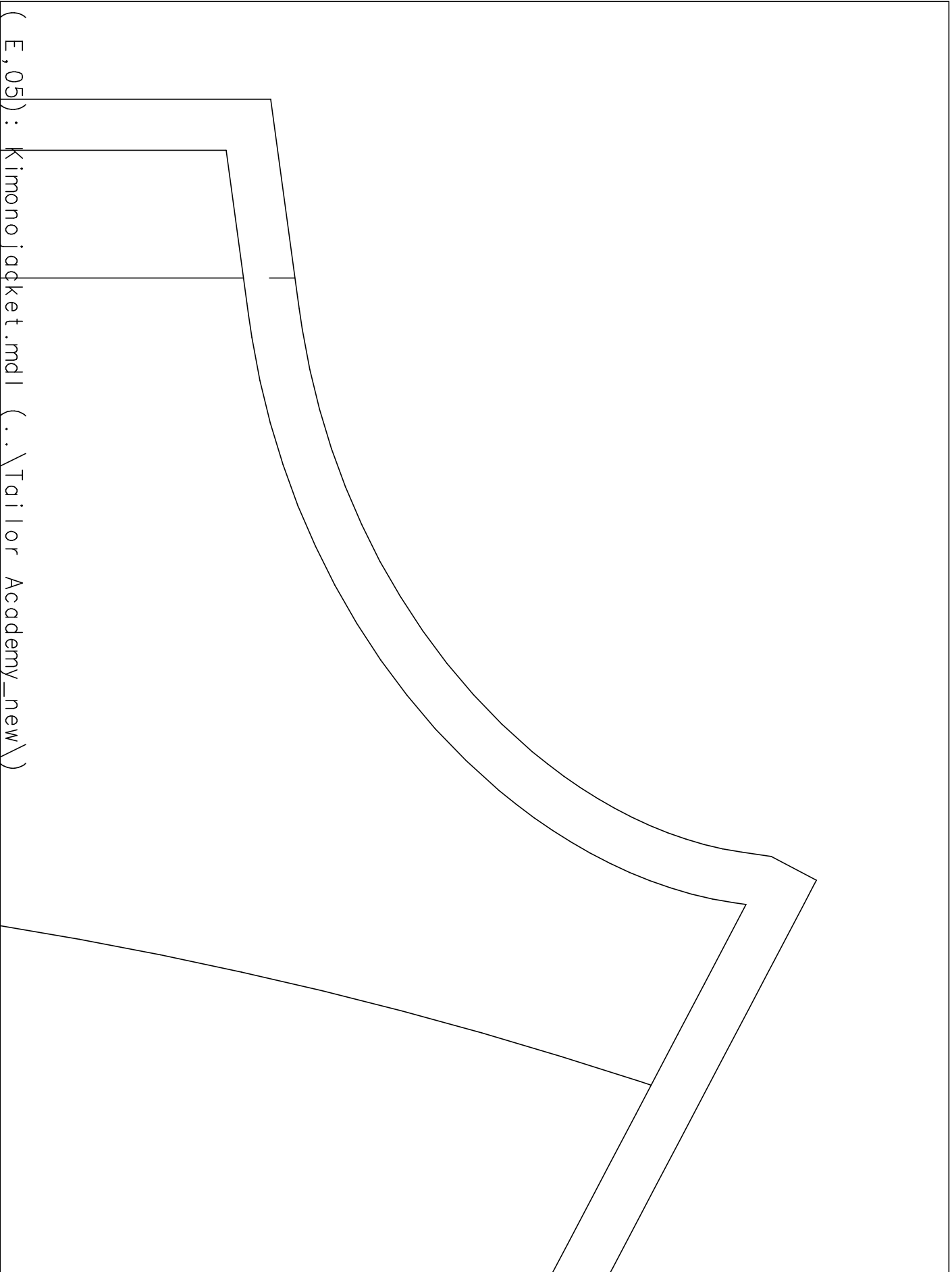
( E, 03) : Kimono jacket.mdl (..\Tailor Academy\_new\)



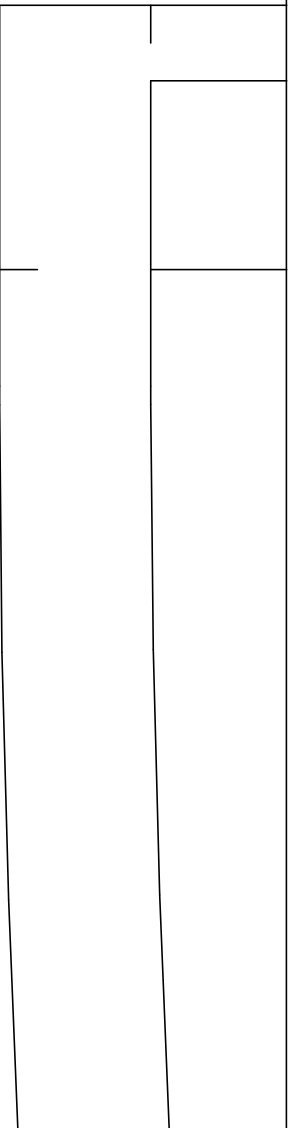
GR\_S

( E, 04) : Kimono jacket.mdl (..\Tai or Academy\_new\)

Acad



Test square  
10cm x 10cm

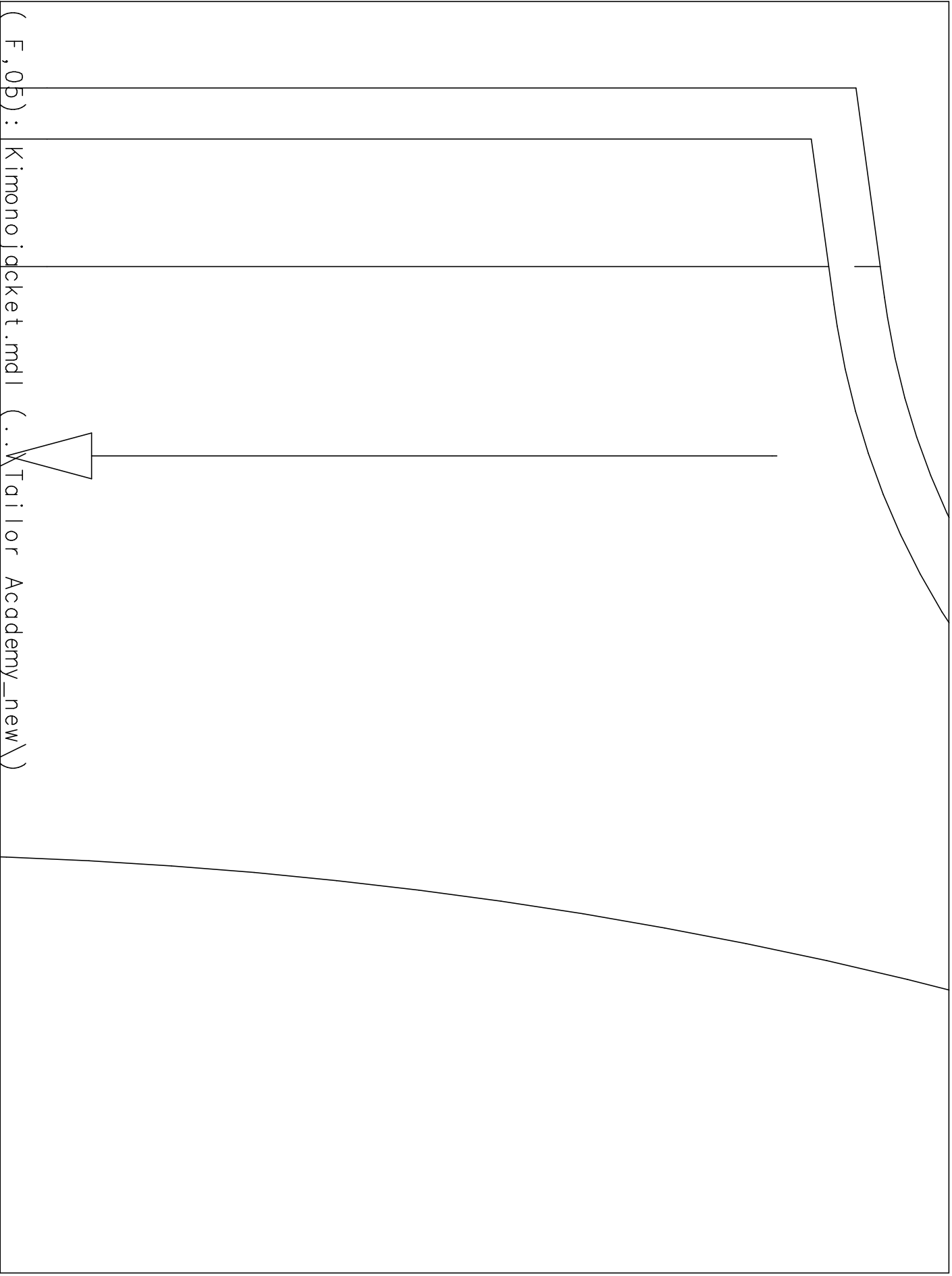


((F,01): Kimono jacket.mdl (..\Tailor Academy\_new\))

[illegible]

( F, 03 ) :	
Kimono jacket.mdl	<div data-bbox="105 682 1503 1243" data-label="Text"> <p> S  Tailor Academy  Kimono jacket  Front panel facing  X outer fabric </p> </div>

( F, 04 ) :	Kimono jacket.mdl	( .. \Tailor Academy_new \ )	





( F, 06 ) : Kimono jacket.mdl ( ..\Tailor Academy\_new\ )

